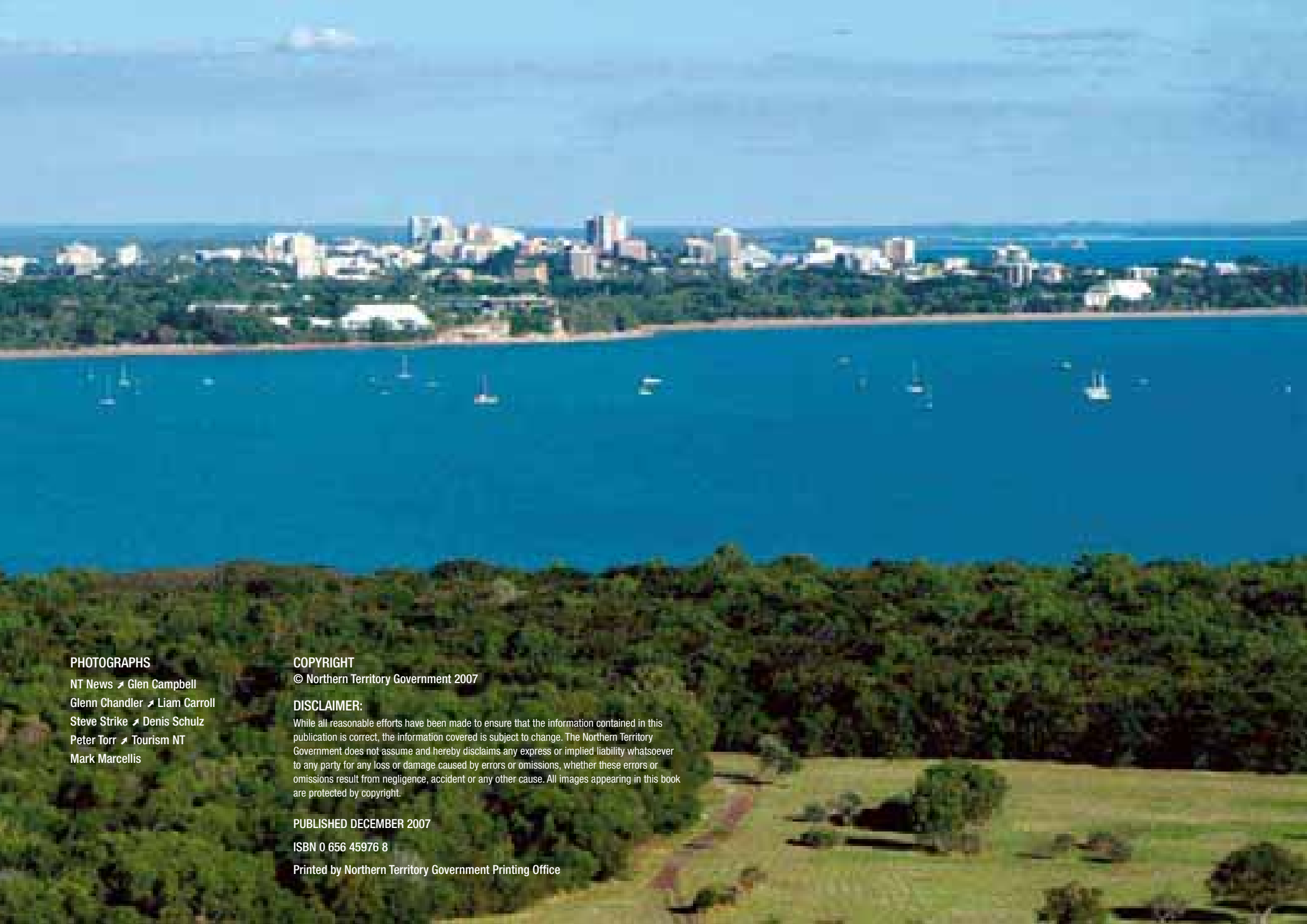




**DARWIN**  
**AUSTRALIA'S**  
**TROPICAL HARBOUR**  
**CITY**



#### PHOTOGRAPHS

NT News ↗ Glen Campbell  
Glenn Chandler ↗ Liam Carroll  
Steve Strike ↗ Denis Schulz  
Peter Torr ↗ Tourism NT  
Mark Marcellis

#### COPYRIGHT

© Northern Territory Government 2007

#### DISCLAIMER:

While all reasonable efforts have been made to ensure that the information contained in this publication is correct, the information covered is subject to change. The Northern Territory Government does not assume and hereby disclaims any express or implied liability whatsoever to any party for any loss or damage caused by errors or omissions, whether these errors or omissions result from negligence, accident or any other cause. All images appearing in this book are protected by copyright.

PUBLISHED DECEMBER 2007

ISBN 0 656 45976 8

Printed by Northern Territory Government Printing Office



# CONTENTS



- THE CITY, THE PLACE ..... 2
- THE CITY IN PERSPECTIVE ..... 8
- THE MULTICULTURAL CITY ..... 12
- THE GROWING CITY ..... 14
- THE CULTURAL CITY ..... 20
- THE PLAYFUL CITY ..... 24
- THE LIVEABLE CITY ..... 30
- THE CITY AT A GLANCE ..... 38





# **THE** **CITY OF OPPORTUNITY**

The tropical harbour city of Darwin is the capital of the Northern Territory. It has become Australia's gateway to Asia and, increasingly, Asia's gateway to Australia's southern states.

The city boasts one of the nation's fastest growing economies, an excellent standard of living and a relaxed, outdoor lifestyle.

Darwin truly is the city of opportunity.



# THE CITY

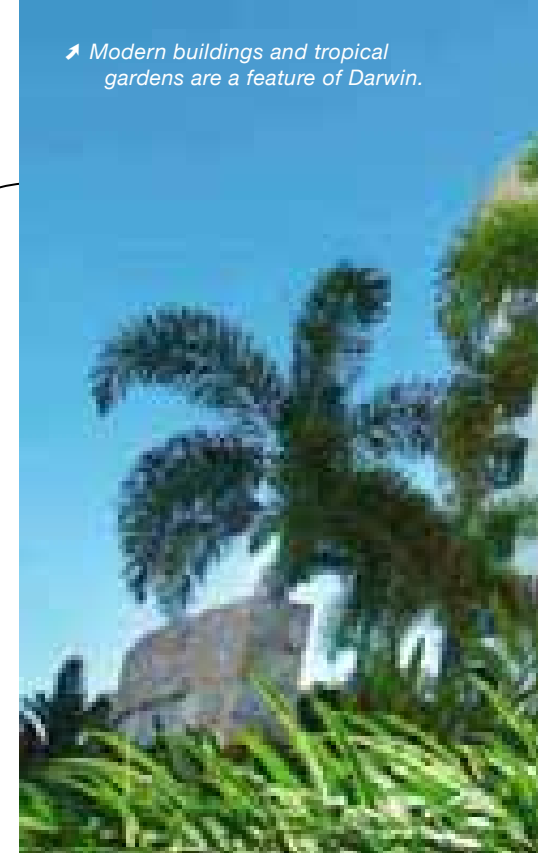
# THE PLACE

Darwin has a stunning natural environment. It is a green city with spectacular ocean views and a tropical look and feel that leaves a lasting impression on visitors.

Darwin Harbour – twice the size of Sydney Harbour – surrounds the city centre and is a popular attraction for both locals and visitors to the Top End.

**AT THE TOP OF AUSTRALIA** ↗ Darwin is closer to many Asian capitals than it is to Australia's capital - Canberra. It sits on the cusp of two dynamic regions with a future that lies to both its north and south.

↗ Modern buildings and tropical gardens are a feature of Darwin.



↗ Darwin is a modern tropical city that welcomes new business and residents.



↗ The tropical climate encourages outdoor dining.

➤ From natural mangroves to the beautifully maintained Botanic Gardens, Darwin features a wonderful outdoor environment.

---

## NATURAL ENVIRONMENT

➤ The natural environment in and around Darwin makes it a paradise for people who love the outdoors. In the city centre, the George Brown Botanic Gardens features an impressive display of tropical and sub-tropical plants, rainforest ecosystems and an elevated walk through the mangroves. Beaches and freshwater creeks are popular places for people to meet, exercise and share time with family and friends. Safe swimming is provided at a number of recreational lakes.



➤ Fishing at East Point Darwin



↗ *George Brown Botanic Gardens*



## TROPICAL CLIMATE

↗ A tropical climate means that Darwin enjoys great weather. The Dry Season offers cool nights and crisp clear days while the Wet Season is punctuated by monsoonal rain and spectacular lightning shows. This climate shapes an outdoor lifestyle featuring al fresco dining, concerts under the stars, outdoor markets and sunset cruises.



↗ Gunlom Falls is in the World Heritage Listed Kakadu National Park, within easy driving distance of Darwin.

## NATIONAL PARKS

➤ National parks showcase a natural environment that is renowned the world over. Charles Darwin National Park and Holmes Jungle are situated close to the city centre, while Litchfield National Park and the World Heritage Listed Kakadu National Park are within easy driving distance.



➤ Termite Mounds - Litchfield National Park

➤ Jim Jim Falls - Kakadu National Park



➤ Charles Darwin National Park

# THE CITY IN PERSPECTIVE



Darwin is a city of many influences and has a unique place in Australia's history. The city continues to develop rapidly but still embraces and celebrates its rich and diverse history and heritage.

## FIRST INHABITANTS

➤ Darwin's Larrakia people say they have been here since the Dreamtime, when ancestral beings created the earth and everything living in it. For the Larrakia, Darwin's beautiful setting is proof of the work of their creative ancestors.



➤ Indigenous art has captured world wide attention.

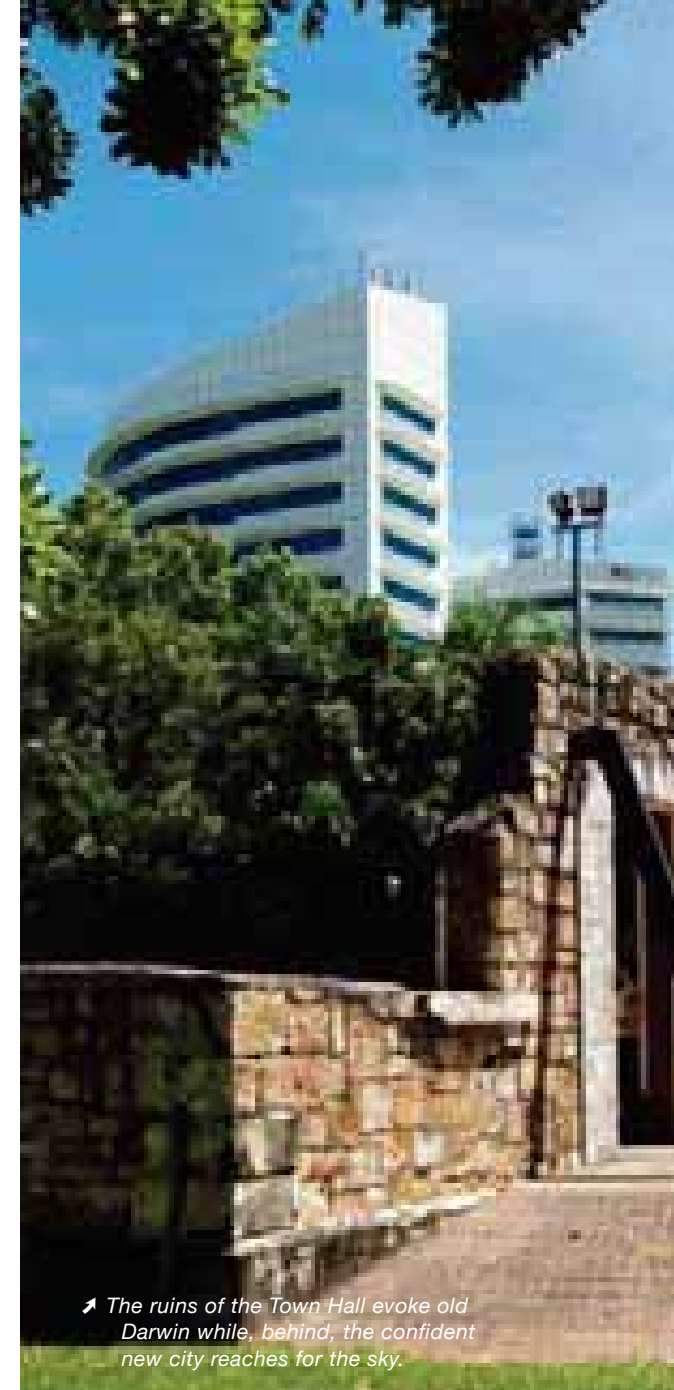
↗ Darwin in 1885.



## NEW ARRIVALS

↗ Darwin's first white settlers arrived on 5 February 1869 and were met and welcomed by the Larrakia people. Slowly but surely, a city grew on the plateau above the waterfront area. Destroyed several times by wartime air raids and Cyclone Tracy, Darwin has always held the loyalty of its people who, after each disaster, rebuilt their city.

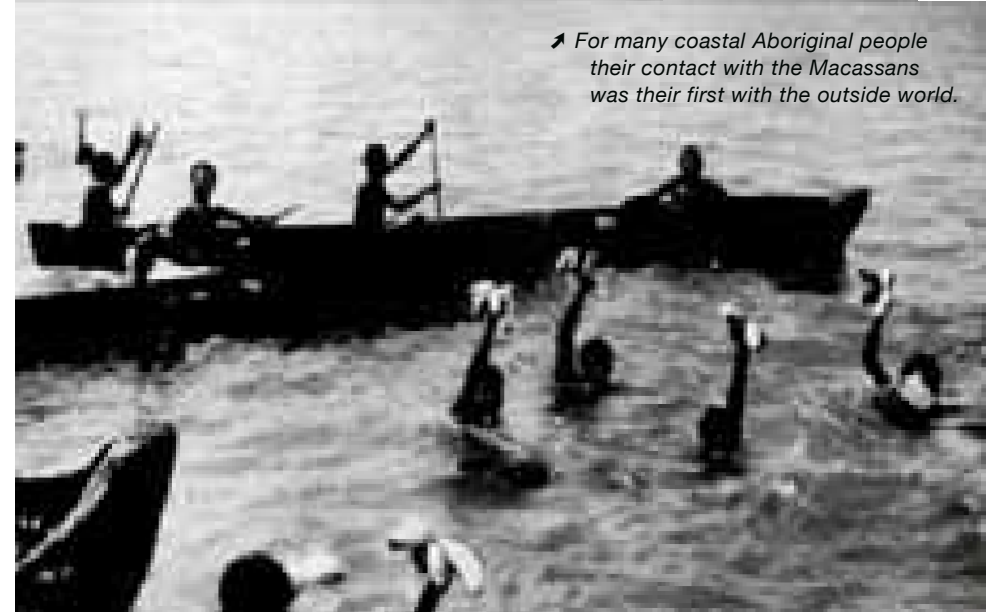
↗ *The Town Hall, opened in 1883, was Darwin's most handsome building until it was destroyed by Cyclone Tracy.*



↗ *The ruins of the Town Hall evoke old Darwin while, behind, the confident new city reaches for the sky.*

## TREPANGERS, PEARLERS AND DIGGERS

↗ Macassan seafarers first came here over 300 years ago to harvest trepang. It was Australia's first export. Chinese miners arrived in the 'New Gold Mountain' of the Top End from 1874. For many years they outnumbered local Europeans and Aboriginal people. From 1884, pearl shell lured divers and deckhands from Japan and across south-east Asia. Later, Greek migrants dominated the pearl shell and pearling industries.



↗ For many coastal Aboriginal people their contact with the Macassans was their first with the outside world.



↗ Chinese miners dominated the Top End goldfields from the 1880s and went on to dominate commerce in Darwin.

↗ The pearling industries contributed to Darwin's cultural mix.



↗ Darwin Harbour, 19 February 1942.



↗ Several World War II defence installations have been turned into display centres.

## AUSTRALIA'S FRONT LINE

↗ Darwin was Australia's first line of defence during World War II and suffered many air raids. The first, on 19 February 1942, cost at least 243 lives and virtually destroyed the town. Darwin has grown in strategic relevance and is now home to around 10 per cent of Australia's defence combat personnel.



↗ After the first raids, troops were rushed north to defend the nation against invasion.

# THE MULTICULTURAL CITY

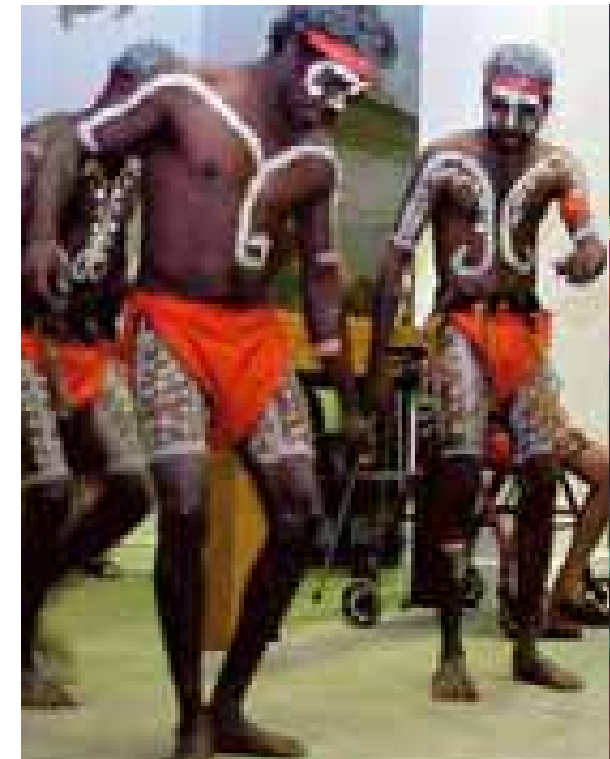
Given its history and heritage, it is not surprising that Darwin has a truly international flavour. People from more than 100 nations call the Top End home and their influence can be seen in all aspects of the Territory lifestyle.

## CEREMONY

➤ The annual opening of Parliament is a carnival of sight and sound. It features a 'smoking' by local Larrakia Aboriginal people, as well as a traditional visit by a Chinese lion.



➤ *The opening of the Northern Territory Parliament.*



➤ Darwin's multicultural nature is celebrated in its many local festivals.

.....



## MELTING POT

➤ Darwin enjoys a reputation as one of Australia's most harmonious places to live and is a melting pot of cultures, nationalities and personalities.

The Chinese Temple is in the city centre while mosques, temples and other places of worship are dotted throughout the city.

The Greek Glenti festival and Chinese New Year are very popular with locals. Multicultural clubs and centres include the Italian Club, Filipino Community Centre, Portuguese and Timorese Social Club, Buddhist Society and Islamic Society.

# THE GROWING CITY

The Northern Territory and Darwin have experienced strong economic growth in recent years.

Real State Final Demand increased by 2.1 per cent in 2006-07 and goods exports grew by 19.1 per cent, reaching \$3 846 million. In the next five years the Territory's economic growth is forecast to average 4.6 per cent.

↗ The Freightlink rail freight terminal is close to the port.



↗ East Arm Port is just 20 minutes from Darwin and boasts full intermodal integration with the national rail and road networks.

## AUSTRALIA'S ASIAN GATEWAY

↗ Positioned on the rim of Asia, Darwin enjoys a natural strategic advantage as a transport hub, with access to modern trade infrastructure including the deepwater port at East Arm, excellent communication facilities, the transcontinental AustralAsia Railway and links to the national highway network.



↗ The Vopak terminal takes advantage of its position adjacent to the railway and port.



↗ Recently serviced oil rig in Darwin Harbour.

➤ *The Darwin Convention Centre's harbourside location makes it a spectacular place for conferences, exhibitions and conventions. The new cruise ship terminal nearby will welcome the thousands of visitors to Darwin each year.*



## TOURISM

➤ Tourism is one of the key drivers of the local economy. The new Darwin Convention Centre will create opportunities in the business and convention market. Darwin has an international airport, a growing cruise-ship industry and the famous transcontinental Ghan rail journey.

Darwin is known the world over as the gateway to Australia's Outback.



➤ *Tourists come to see and enjoy an ancient environment and culture.*

## GAS-BASED INDUSTRY

➤ Gas-based industry is emerging as a key opportunity for future growth with the establishment of an LNG plant close to Darwin linked by an undersea pipeline to gas reserves in the Timor Sea. The Northern Territory Government has set aside land to support growth in gas-based industry.



➤ Bayu-Undan Offshore



➤ LNG is piped from the Timor Sea onshore to Darwin.



↗ *The Navy has a long and proud history in Darwin.*



## DEFENCE SUPPORT

↗ Defence support offers significant growth opportunities for the Territory with 10 per cent of Australia's combat forces and 6 per cent of the national defence budget in the Northern Territory. The Northern Territory Government has committed to the development of a 60ha Defence Hub near Darwin, creating opportunities for defence support in service, supply and high-tech maintenance fields.



↗ *Darwin is growing its capacity to service the Australian Defence Force's newest helicopters, tanks and vehicles.*

## MINING AND ENERGY

➤ The Mining and Energy sector accounts for almost 30 per cent of Gross State Product. Bauxite, manganese, zinc, lead, silver, uranium, natural gas and oil are all found in the Territory.



➤ LNG is exported from Darwin.



➤ Mining has long been the Northern Territory's largest industry.

# THE CULTURAL CITY

The people of Darwin have always enjoyed and participated in a wide range of cultural activities. In fact, the Northern Territory is one of Australia's highest per capita spenders on art and culture.

## INTERNATIONAL PERFORMANCES

➤ Darwin regularly hosts international performances including ballets, orchestras, theatre and comedy acts. The Darwin Entertainment Centre can cater to both intimate performances and large stage shows. Some performers choose the outdoors for their shows, taking advantage of the city's many outdoor performance spaces.

➤ *International ballet and theatre performances are popular in Darwin.*





➤ *The Darwin Symphony Orchestra is renowned for its outdoor performances.*

.....

## DARWIN FESTIVAL

➤ The annual Darwin Festival in August features two weeks of plays, performances, art shows, concerts and culture. With more than 1000 local, national and international artists and performers, the festival also includes a strong local Indigenous theme. Many of the events are free and around 60,000 people enjoy the fortnight of activities each year.



➤ *Darwin's multicultural nature is celebrated in its many local festivals.*



## ART GALLERIES AND MUSEUMS

➤ Darwin is a mecca for people who love art galleries and museums.

The Museum and Art Gallery of the Northern Territory at Bullocky Point holds an impressive collection of art and artifacts celebrating local Indigenous culture, European and Asian settlement, as well as collections from further afield.

➤ *Numerous art galleries cater to many tastes.*

## INDIGENOUS CULTURE

➤ Darwin has a rich Indigenous culture, with close to a third of Territory residents of Indigenous descent. The Museum and Art Gallery of the Northern Territory features displays on the culture of the traditional owners of Darwin, the Larrakia people, the nearby Tiwi Islanders and Indigenous residents from across the Northern Territory.



➤ *The Deckchair Cinema provides the opportunity to enjoy movies in the Dry Season.*

.....

## FILM FESTIVALS

➤ Film festivals are a feature of Darwin and the city has a growing film and television industry.

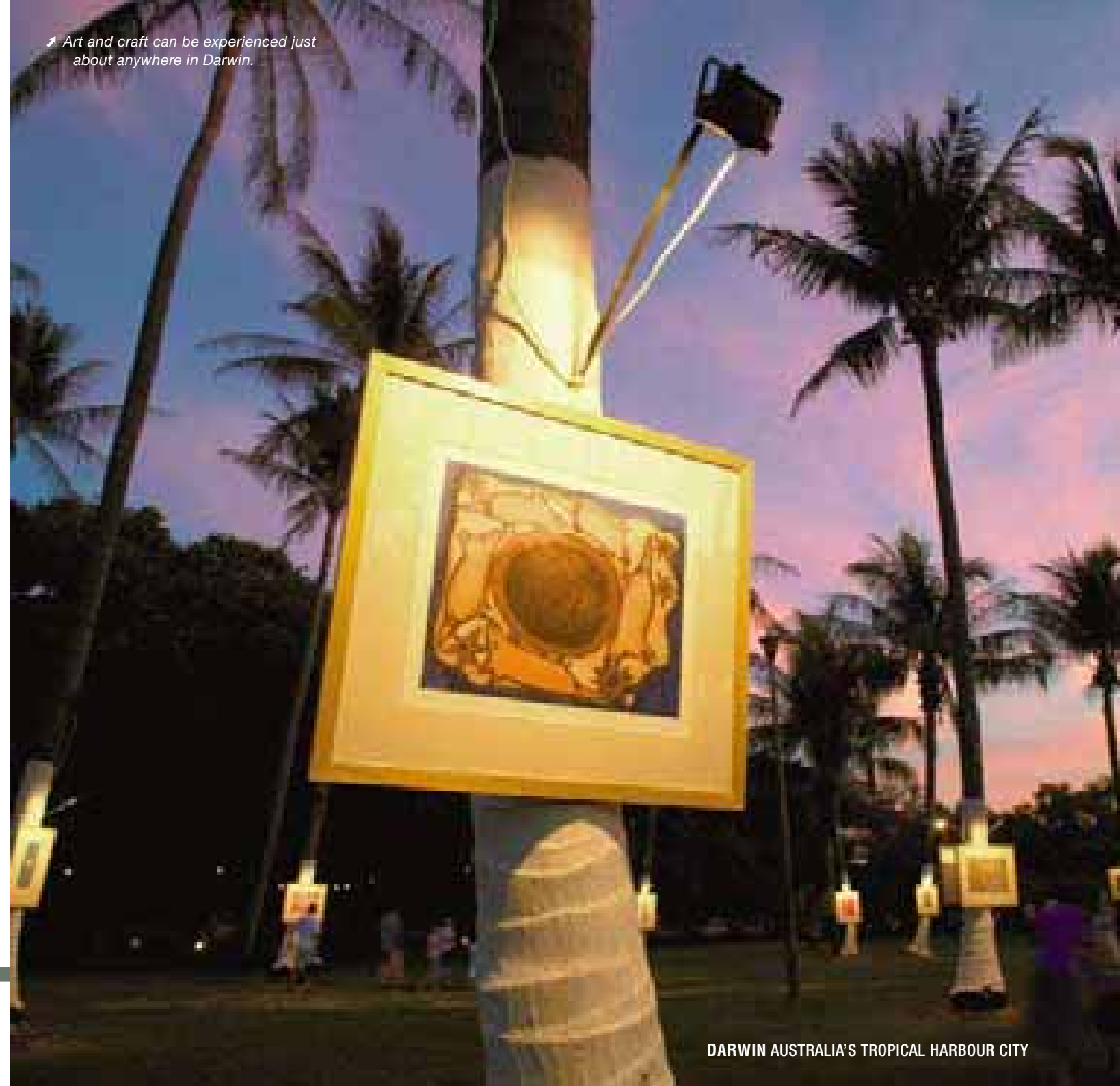
A great experience on a Dry Season evening is to visit the Deckchair Cinema near the city centre and enjoy the magic of the movies under the stars.



↗ *Garma Festival – a prestigious Indigenous event held annually near the township of Nhulunbuy.*

## ARTS AND CRAFTS

↗ Darwin has an active arts community that produces original art, sculpture and craft. Works can be viewed and purchased at art galleries around the city. For a more hands on experience, many local artists display their works at local markets, like the famous Mindil Beach market, held on Thursdays and Sundays during the Dry Season.



↗ *Art and craft can be experienced just about anywhere in Darwin.*

# THE PLAYFUL CITY

Boasting a high standard of living and a healthy outdoor lifestyle, Darwin is a place where people make the most of their leisure time. A wide range of entertainment, sport and recreational pursuits are available for residents to enjoy.

## FISHING

➤ Darwin is an angler's paradise. People come to the Territory from all over the world to catch barramundi or chase sports fish.

Fishing is a popular pastime and is enjoyed by Territorians from all walks of life.



➤ Darwin people love their sport.



↗ Golf is enjoyed at five courses in and around the city, including the beautiful Gardens Park Golf Course next to the Botanic Gardens and casino.

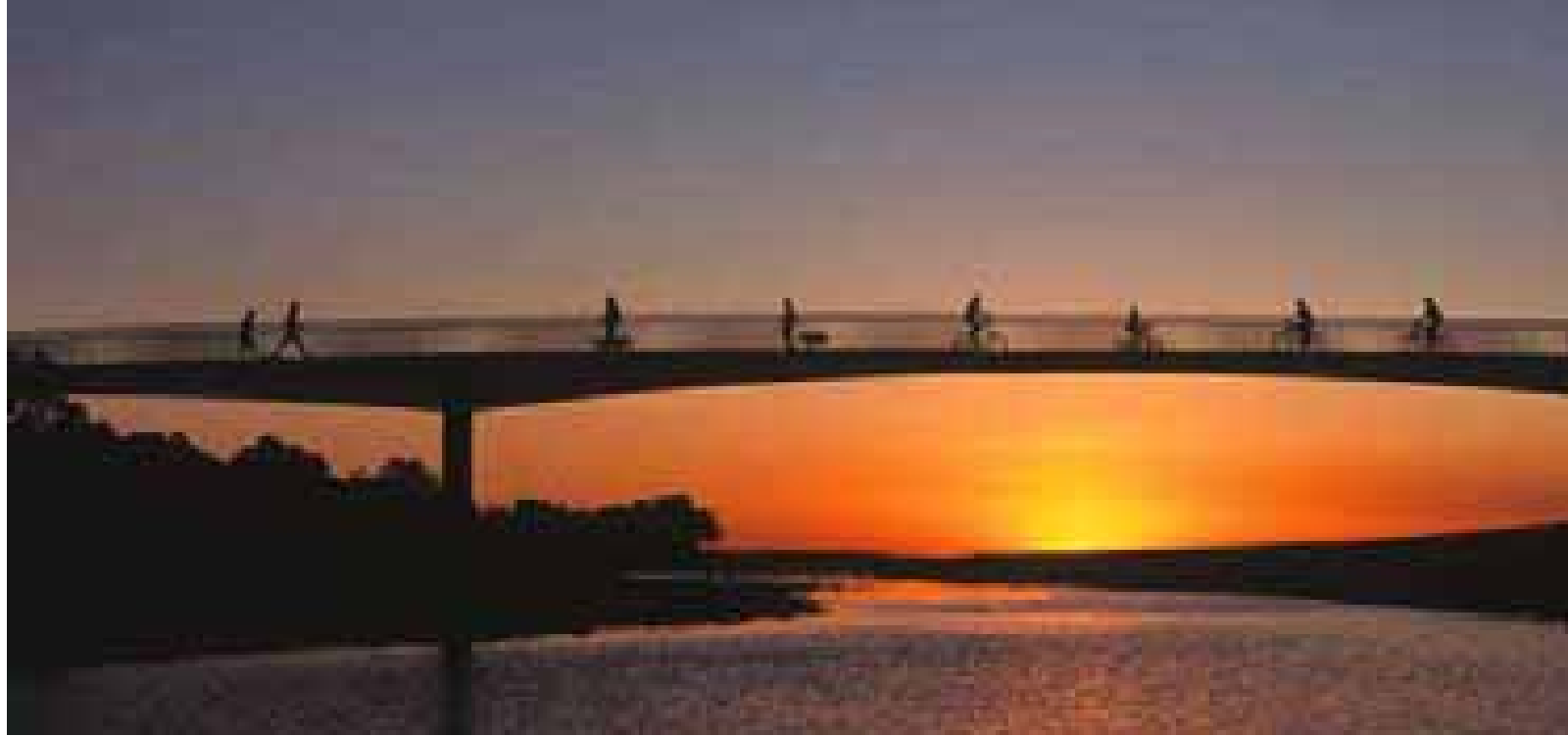
➤ *Walking and cycling tracks are popular in Darwin.*

---

## OUTDOOR LIFESTYLE

➤ Locals love nothing more than getting out and enjoying Darwin's unique outdoor lifestyle.

The city and suburbs have extensive walking and cycle tracks, which link the many parks and recreational areas.



➤ *The fun continues when the sun goes down.*

---



## ENTERTAINMENT

➤ When the sun goes down there is plenty to do around town.

Darwin has excellent restaurants, nightclubs and bars, and a range of exciting entertainment options .

The local casino draws people from all over the world.



↗ *With so much water around, it is not surprising that water sports are popular.*



↗ *Darwin night life has many exciting choices.*

.....

## NATIONAL AND INTERNATIONAL SPORT

➤ With high quality sporting facilities, Darwin is playing host to more and more national and international sporting events. Australian Football League (Australian Rules) matches are played in Darwin each year and the city has also hosted international cricket in recent times.

The Arafura Games, held every two years in Darwin, attracts athletes from across the Asia Pacific region.



➤ *International sports attract thousands of spectators.*



➤ *Darwin people love their AFL. Many of the country's best players come from the Top End of Australia.*

## THEY'RE RACING

➤ Whether you like four legs or four wheels, Darwin is a mecca for the racing enthusiast. Hidden Valley thunders to the sound of the V8 Supercars once a year, bringing visitors from Australia and Asia.

The Darwin Cup Carnival runs throughout July, culminating in the Darwin Cup on the first weekend in August.

➤ V8 racing at Hidden Valley.



➤ The Darwin Cup Carnival features a month of horse racing.

# THE LIVEABLE CITY

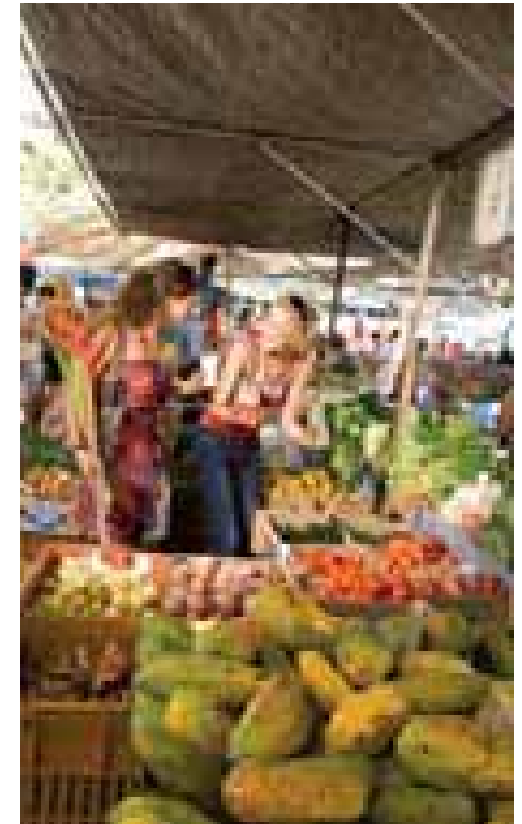
Darwin is a great place to live, with services and facilities the equal of many larger cities. Combine this with a relaxed, outdoor lifestyle, and it's easy to understand why so many people come for a holiday and never leave.

## SUBURBS OF DARWIN

➤ The suburbs surrounding Darwin offer a relaxed and tropical lifestyle with excellent facilities and community parks and play areas. The tree-lined streets and unique architecture give Darwin an unmistakable tropical signature.



➤ Well maintained tropical suburban streetscape.



➤ Markets are a highlight of the suburban lifestyle.



↗ Local cafes are a focal point for community life.



↗ Waterparks and family facilities.

↗ Darwin's suburban centres are places for friends and family to gather and enjoy a variety of local shops and markets, as well as a relaxed and secure community environment.

## HOUSING

➤ Housing in Darwin is diverse. Inner city apartments and penthouses are becoming more popular while large sprawling rural blocks can be found just 20 minutes from the city centre.

➤ Many homes are designed for a tropical environment.



➤ *Waterside living is a feature of a number of Darwin suburbs.*

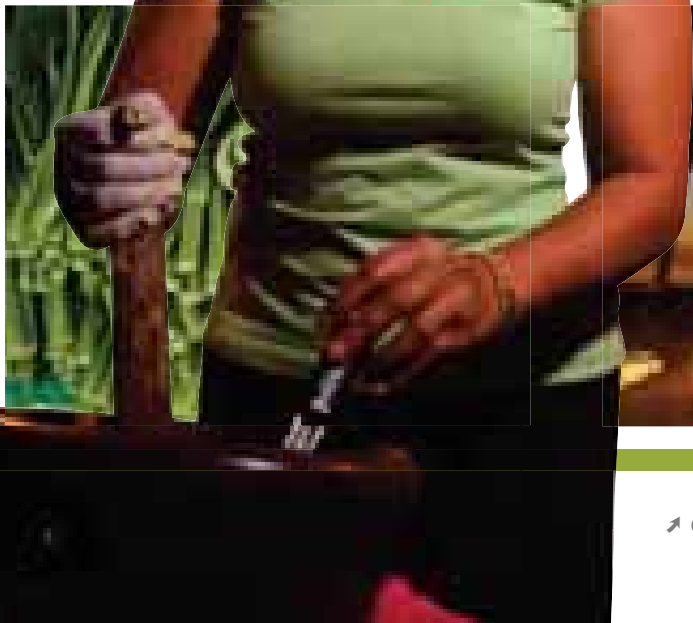
## SHOPPING AND MARKETS

➤ Darwin is an exciting place to shop and has a vibrant retail sector in its CBD. There are also a number of large shopping centres across Darwin with food courts, cinema complexes, specialist boutiques and major retailers.

Markets selling crafts, fresh fruit and vegetables, and wares from local and Asian sources are also a feature of the Darwin shopping experience.



➤ Large shopping centres are located in the city, Casuarina and Palmerston.



➤ Outdoor markets are popular places to shop, eat and have fun.

## HEALTH SERVICES

➤ Health services include both a public and private hospital, as well as the internationally-recognised Menzies School of Health Research. The city is well serviced by general practitioners and medical specialists.

Darwin is recognised as a leader in emergency medicine and has been the first response centre for a number of regional emergencies.

➤ *Royal Darwin Hospital has excellent facilities and is complemented by the adjacent Darwin Private Hospital.*

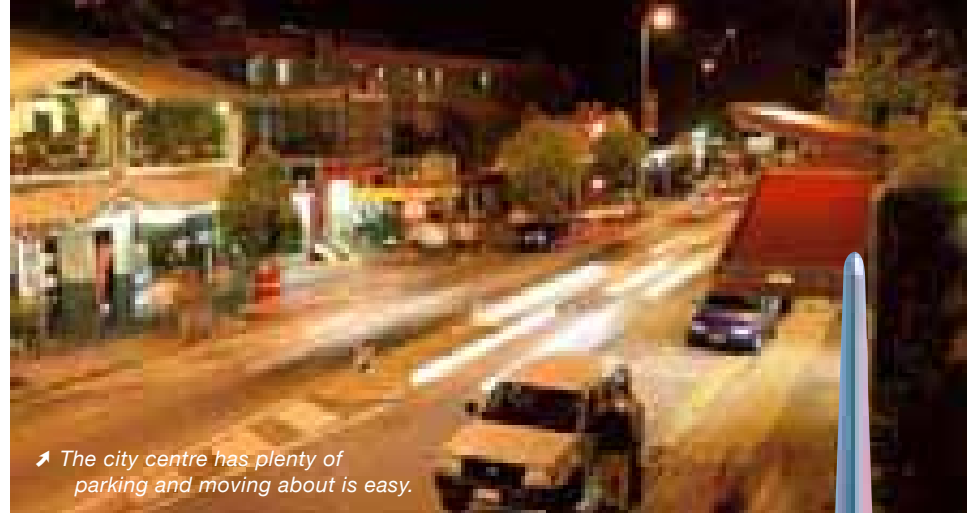


## TRANSPORT

➤ Getting around is easy in Darwin. The city has an excellent road, walking and cycling network, and good public transport. There is also little 'peak hour' traffic.

Darwin Airport caters for international, domestic and regional air transport and is just 2.5 hours flying time from South East Asia.

The famous Ghan passenger train is renowned as one of the world's great train journeys and runs twice weekly between Adelaide and Darwin, linking to Perth, Sydney and other Australian cities.



↗ The city centre has plenty of parking and moving about is easy.



↗ The famous Ghan passenger train travels to Darwin twice a week.

↗ An excellent road network connects Darwin to the rest of Australia.

.....



↗ Darwin International Airport caters for regional, domestic and international flights.

.....

## CHILD CARE

➤ Child care options are available for children from six weeks through to five years of age. A combination of community and commercial child care centres offer a broad range of options. Family Day Care is also available through a network of stay-at-home mothers who are supervised and supported through a community network.

➤ Flexible child care options are available for children from six weeks to five years of age.



## PRIMARY EDUCATION

➤ The standard of primary education is excellent and is provided by both government and private schools. Children begin pre-school at around four years of age then move into a transition year of primary school when they turn five. Primary school continues to Year 6.

➤ Primary schools are of an excellent standard



↗ Charles Darwin University offers study up to postdoctoral level and is recognised for its expertise in a number of research areas.



## SECONDARY EDUCATION

↗ Secondary education is provided through both government and private schools. Darwin has a new schooling system that sees dedicated middle schools cater for Year 7 to 9 students.

Students from Years 10 to 12 have the opportunity to enrol in senior secondary colleges across Darwin.

Vocational education and training is provided in both secondary schools and dedicated colleges.

↗ Secondary schools include both government and private options.

.....



## TERTIARY EDUCATION

↗ Charles Darwin University provides vocational, technical, undergraduate and postgraduate qualifications. It is also a leading Australian research institution, with its Institute of Advanced Studies offering specialist research in social policy, tropical and desert knowledge and Indigenous governance.

A network of Registered Training Organisations also provides vocational education and training.

# THE CITY AT A GLANCE



POPULATION ↗ 115 000

CLIMATE ↗ TWO TROPICAL SEASONS

DRY SEASON ↗ MAY TO OCTOBER 21.6°C – 31.6°C

WET SEASON ↗ NOVEMBER TO APRIL 24.7°C – 32.3°C

## KEY INDUSTRIES

- ↗ Gas-Based manufacturing
- ↗ Defence support
- ↗ Mining and energy
- ↗ Tourism
- ↗ Retail
- ↗ Transport and logistics
- ↗ Government

## MAJOR EVENTS

- ↗ Arafura Games
- ↗ V8 Supercars
- ↗ Darwin Festival
- ↗ International Cricket
- ↗ Darwin Cup
- ↗ Barra Fishing Classic
- ↗ AFL (Australian Rules Football)



[WWW.THETERRITORY.COM.AU](http://WWW.THETERRITORY.COM.AU)

1800 006 282 | +61 8 8946 9555